

# Dry Lube Applicator

## WHAT IT IS & HOW IT WORKS

The Dry Lube Injector unit uses a charger plate injector system to deliver a consistent and precise application of dry lube media to each and every shot. The precise application is accomplished by the volume of the hole in the charger plate which is filled with media when in the charging position. When the charging plate shifts into the injection position the media is blown thru a tube into the shot sleeve.

Blank charger plates are inexpensive, interchangeable and easy to change out and they come with a pilot hole to locate the finished hole size. The blank charger plate can be properly sized to your requirement by simply drilling out the pilot hole after determining the correct volume needed to efficiently lubricate the tip and sleeve.

The application unit operates using standard off the shelf solenoid valves and an air cylinder with replaceable seals. The unit comes with an air filter/regulator to maintain constant system pressure. Plus a low pressure regulator and gage for controlling the media dispensing pressure. This is to eliminate media being blown out of the shot sleeve. The unit is designed to allow for quick and easy access to the injection mechanism in the event that the media becomes clogged. The hopper is enclosed with a sight glass giving full frontal view of the inside of the hopper.



**What would be the benefits of a Dry Lube Injector on my die cast machine?**

- Dry Lube eliminates the need to monitor & control lube mix ratio
- Dry Lube eliminates mess on the shot end of the machine caused by wet lubes
- Application of dry lube beads is more consistent than wet lube
- Increases Plunger Life
- Increases Shot Sleeve Life
- Reduces machine down time do to plunger & sleeve repair
- Reduces Gas Porosity
- Precise placement of lubricate
- Improves process control by using the same charger plate with the same die the exact amount of lube can be duplicated run to run
- Lower lube cost per shot
- All of these items lower your overall production costs

## BASE UNIT FEATURES

The Dry Lube Unit is equipped with the following basic features.

- Low initial capital investment cost.
- Single solenoid valve for operation of unit that would need a signal from the die cast machine.
- Includes 2 easily changeable blank charger plates for customizing, to suit your specific need.
- A Filter/Regulator for incoming air.
- A separate low pressure regulator for the media dispensing air.
- NEMA 1 panel to house the valves and regulators.
- 580 cubic inch steel media hopper.
- EZ to view large sight glass.
- Powder coated frame and media hopper.
- Inter Changeable Charger Chambers
  - MC-10 ~ ½" Chamber
  - MC-30 ~ 1" Chamber
  - MC-50 ~ 1 ¾" Chamber

## GENERAL SPEC'S

**UNIT WEIGHT** – 50 lbs

**SIZE OF DRY LUBE UNIT** –

23" Wide x 21" Tall x 6" Deep

**Electric** – 120V AC or 24V DC

**Air Line Connection** – ¼" NPT

**Warranty** – 1 year

**Schwoeppe**  
**ENGINEERED PRODUCTS**

16240 Hwy O  
Marthasville, MO 63357  
Phone: (636) 433-2532  
Fax: (636) 433-2540

[www.schwoeppeproducts.com](http://www.schwoeppeproducts.com)

## OPTIONAL EQUIPMENT

Available Options:

- **Injector Nozzle Cylinder & Plumbing Kit** – The injector nozzle thruster will extend and retract a total of 12" allowing the injector nozzle to extend into the shot hole for better placement of the media. Option to include thruster cylinder, universal mount, 10' of tubing between the Charger Plate Injector and the Injection Cylinder and a Pneumatic Valve with poly tubing and fittings to plumb to Cylinder.

- **Set of Master Plates with Interchangeable Sleeves** – Approximate Charger Plate capacities. (Master set used for first time die set-up.)

### MC-10 (Set of 8)

.16 gram – 1.98 grams

### MC-30 (Set of 17)

2.18 grams – 8.7 grams

### MC-50 (Set of 8)

9.3 grams – 15.2 grams

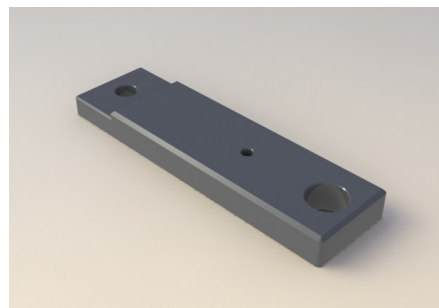
- **Additional Blank Charger Plates** – With additional charger plates you can have them customized per die.

**MC-10**

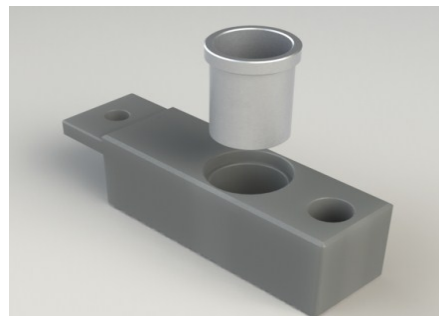
**MC-30**

**MC-50**

Custom options can be quoted upon request, please speak to your sales representative for more details.



MC-10 Charger Chamber shown with .187 diameter hole (.16 Gram) size.



MC-50 Master with the interchangeable sleeve. Master sleeve shown is a 1.00 diameter hole (15.2 Gram) size.